

STATE OF ARKANSAS
STATE HIGHWAY COMMISSION

| FISCAL YEAR | JOB NO. | SHEET NO. | TOTAL SHEETS | FED. DIST. NO. | STATE | ARK. PROJ. NO. | FISCAL YEAR | SHEET NO. | TOTAL SHEETS |
|-------------|---------|-----------|--------------|----------------|-------|----------------|-------------|-----------|--------------|
| 1930 | 5133 | 1 | 9 | 6 | ARK. | 2-A | 1930 | 1 | 9 |

INDEX OF SHEETS

| Sheet No. | Drwg No. | Title |
|-----------|----------|---|
| 1 | 3019 | Title Sheet |
| 2 | 3020 | Layout of Bridge No. 1400 |
| 3 | 3021 | Details of 255' Suspension Span, 13' Roadway. |
| 4 | 3022 | Details of Anchors and Cast Steel Saddles. |
| 5 | 3023 | Details of End Towers. |
| 6 | 3024 | Details of Abutments. |
| 7 | FS22A | Typical Cross Section, 22' Roadway |
| 8 | W53 | Curve Widening |
| 9 | W53A | Superelevation |

**PLAN OF PROPOSED BRIDGE
OVER
NORTH SYLAMORE CREEK
STONE COUNTY**

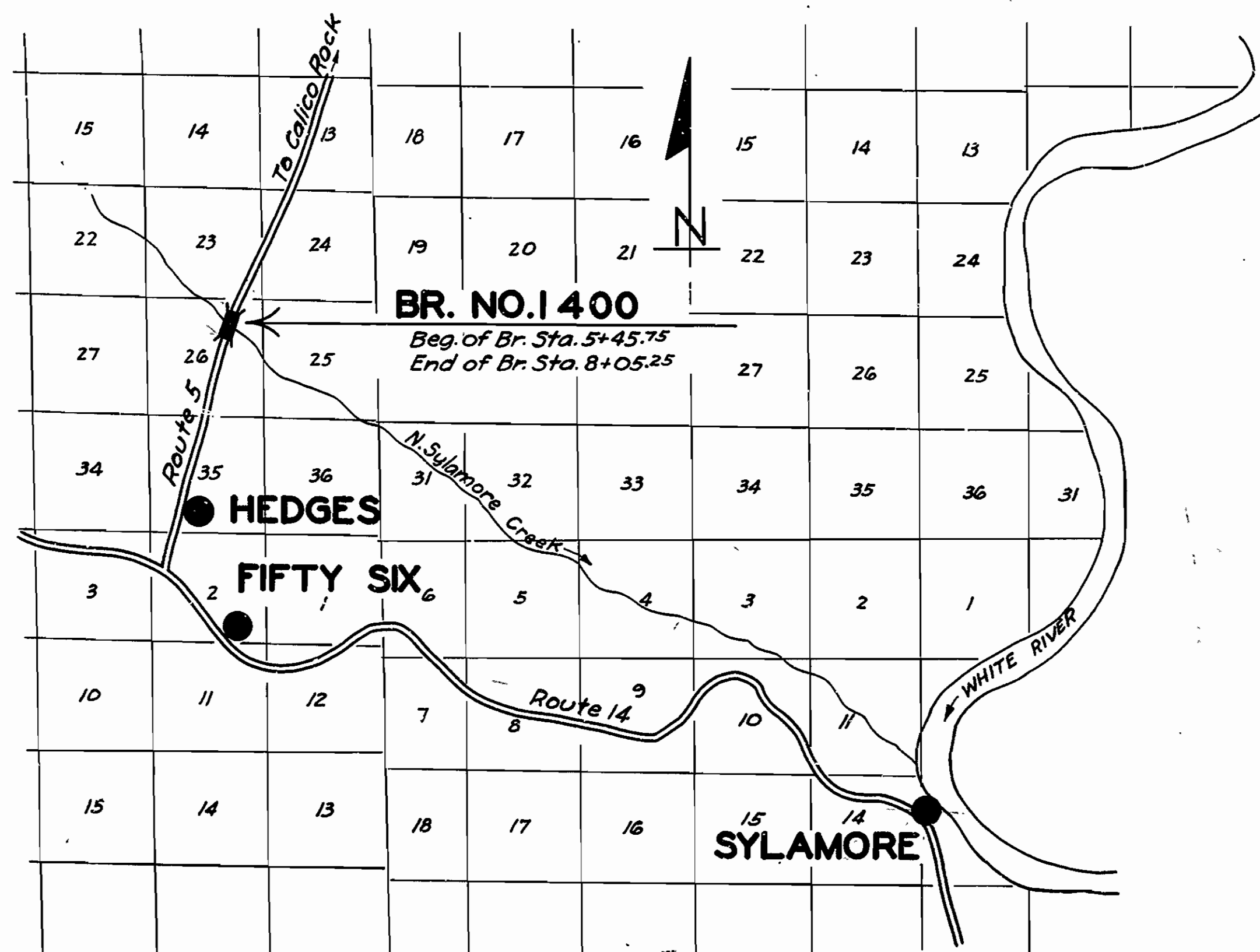
QUANTITIES

| S.P. & Item No. | Description | Quantity | Unit |
|-----------------------|--------------------------------------|----------|-------------|
| " " 12 | Common Excavation | 1 00 | Cu. Yds. |
| " " 12 | Solid Rock Excavation | 3 50 | " " |
| " " 13 | Dry Excavation for Structures | 2 5 | " " |
| " " 13 | Solid Rock Excavation for Structures | 6 27 | " " |
| S.P. & " " | 52 Untreated Bridge Timber | 3 675 | M. Ft. B.M. |
| S.P. & " " | 52 Treated Bridge Timber | 21 090 | " " " |
| " " 54 | Class "A" Concrete | 13 256 | Cu. Yds. |
| " " 55 | Reinforcing Steel | 18 375 | Lbs. |
| " " 56 | Structural Steel | 29 000 | " " |
| " " 74 | Concrete Railing for Structures | 16 | Lin. Ft. |
| S.P. Galvanized Steel | Bridge Cable | 780 | " " |
| S.P. Steel Castings | | 5,100 | Lbs. |

Forest Project Markers of Approved Design are to be Furnished by State and are to be Placed at Both Ends of Bridge.

ROUTE 5 SEC. 6
JOB No 5133
ARKANSAS FOREST PROJECT NO. 2-A

Class "S"



LAYOUT

Scale: 1"=1 Mile

| | |
|-------------------------|-----------------------|
| ARKANSAS FOREST PROJECT | = 859'-6" = 0.162 MI. |
| LENGTH OF BRIDGES | = 259'-6" |
| LENGTH OF EMBANKMENT | = 600'-0" |
| LENGTH OF JOB | = 859'-6" |

Specifications approved by Chief, Bureau of Public Roads, September 28, 1925, and adopted by State Highway Commission May 30, 1925 with revisions and Special Provisions as follows:

REVISIONS

| Pamphlet | Revised | Date | Approved | Date |
|----------|---------|-----------------|----------|-----------------|
| A | Revised | Sept. 1st, 1928 | Approved | June 1st, 1929 |
| B | Revised | Nov. 1st, 1929 | | |
| C | " | July 1st, 1930 | | |
| D | Revised | July 1st, 1928 | Approved | Nov. 24th, 1928 |
| E | Revised | Jan. 1st, 1930 | | |
| F | Revised | Aug. 1st, 1929 | | |
| G | Revised | June 1st, 1929 | | |
| H | Revised | Jan. 1st, 1930 | | |
| I | " | May 30th, 1925 | | |
| J | Revised | Jan. 1st, 1929 | Approved | June 1st, 1929 |
| K | " | May 30th, 1925 | | |
| L | Revised | Jan. 1st, 1929 | Approved | June 1st, 1929 |

SPECIAL PROVISIONS

| Item | No. of Sheets |
|------------------------------------|---------------|
| Common Excavation | 3 |
| Bridge Timber | 12 |
| Steel Castings | 1 |
| Structural Steel | 1 |
| Bridge Cable | 1 |
| Engineers Field Office Section 8.2 | 1 |
| Concrete Aggregate | 2 |

APPROVED
CHIEF ENGINEER - U. S. BUREAU OF PUBLIC ROADS
APPROVED
DISTRICT ENGINEER - U. S. BUREAU OF PUBLIC ROADS
APPROVED
CHIEF - U. S. BUREAU OF PUBLIC ROADS
APPROVED
CHAIRMAN - STATE HIGHWAY COMMISSION
APPROVED
STATE HIGHWAY ENGINEER

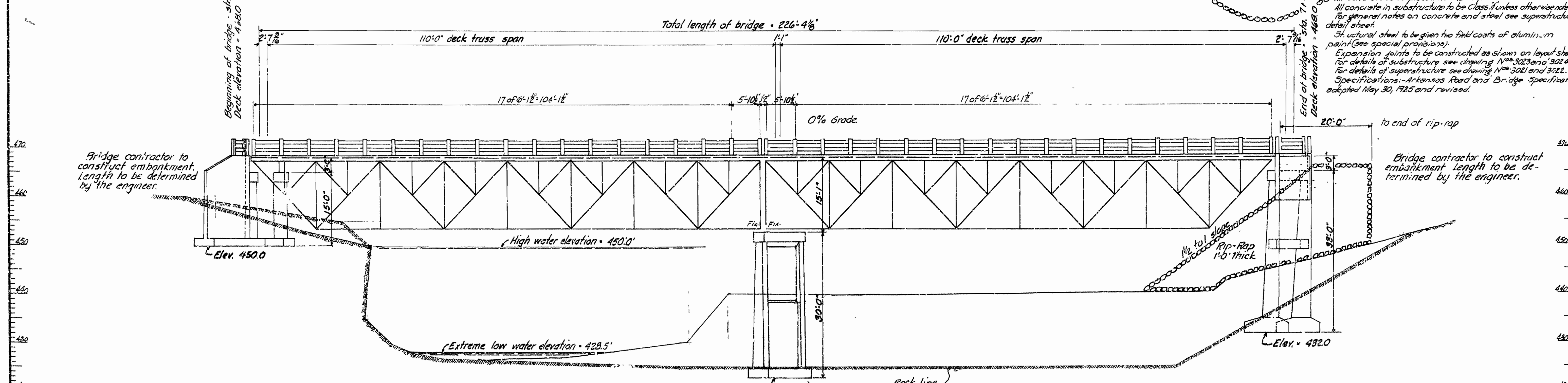
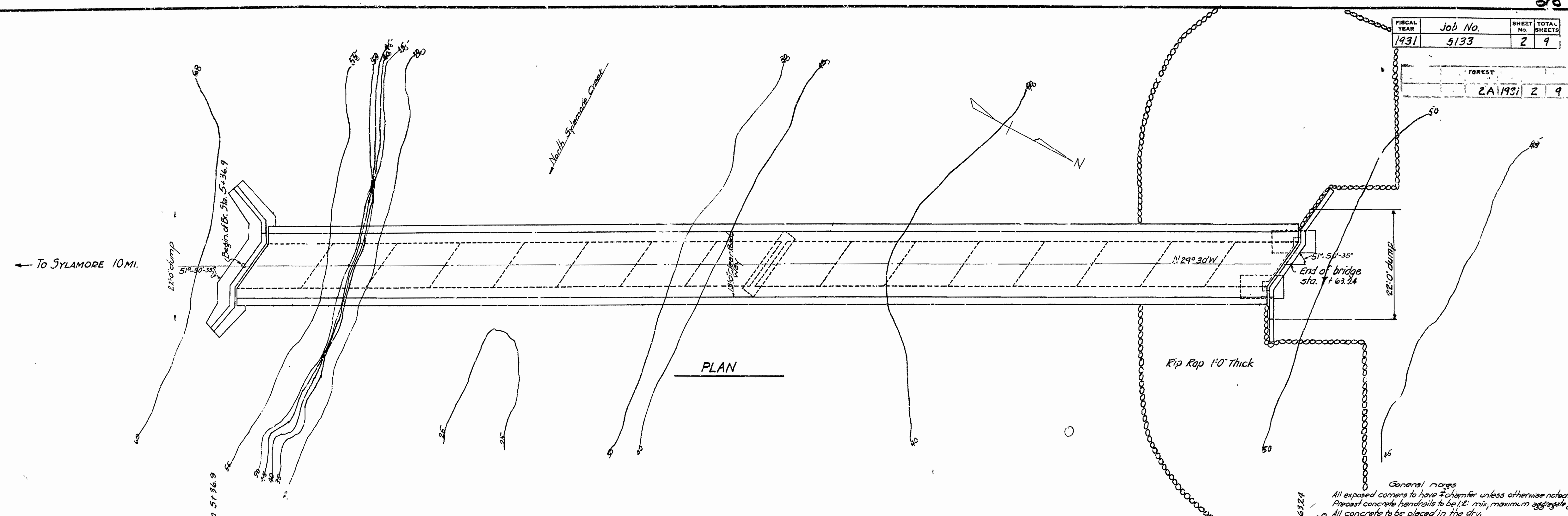
M.B. Law
BRIDGE ENGINEER

BRIDGES No. 1400

DRAWING No. 3019

| | | | |
|-------------|---------|-----------|--------------|
| FISCAL YEAR | Job No. | SHEET No. | TOTAL SHEETS |
| 1931 | 5133 | 2 | 9 |

| | | | |
|--------|------|---|---|
| FOREST | | | |
| 2A | 1931 | 2 | 9 |



Bench mark elevation = 440.69 on 8" hard maple 75' left of station.
 Drainage area = 65 sq. miles.

D.A. = 62 sq. mi. mountainous

LAYOUT OF BRIDGE OVER
 N. SYLAMORE CREEK
 STONE COUNTY
 ROUTE 5 SEC. 6

ARKANSAS STATE HIGHWAY COMMISSION
 LITTLE ROCK, ARK.

Drawn By: _____ Date: _____
 Traced By: _____ Date: 3-16-31
 Checked By: _____ Date: 3-25-31

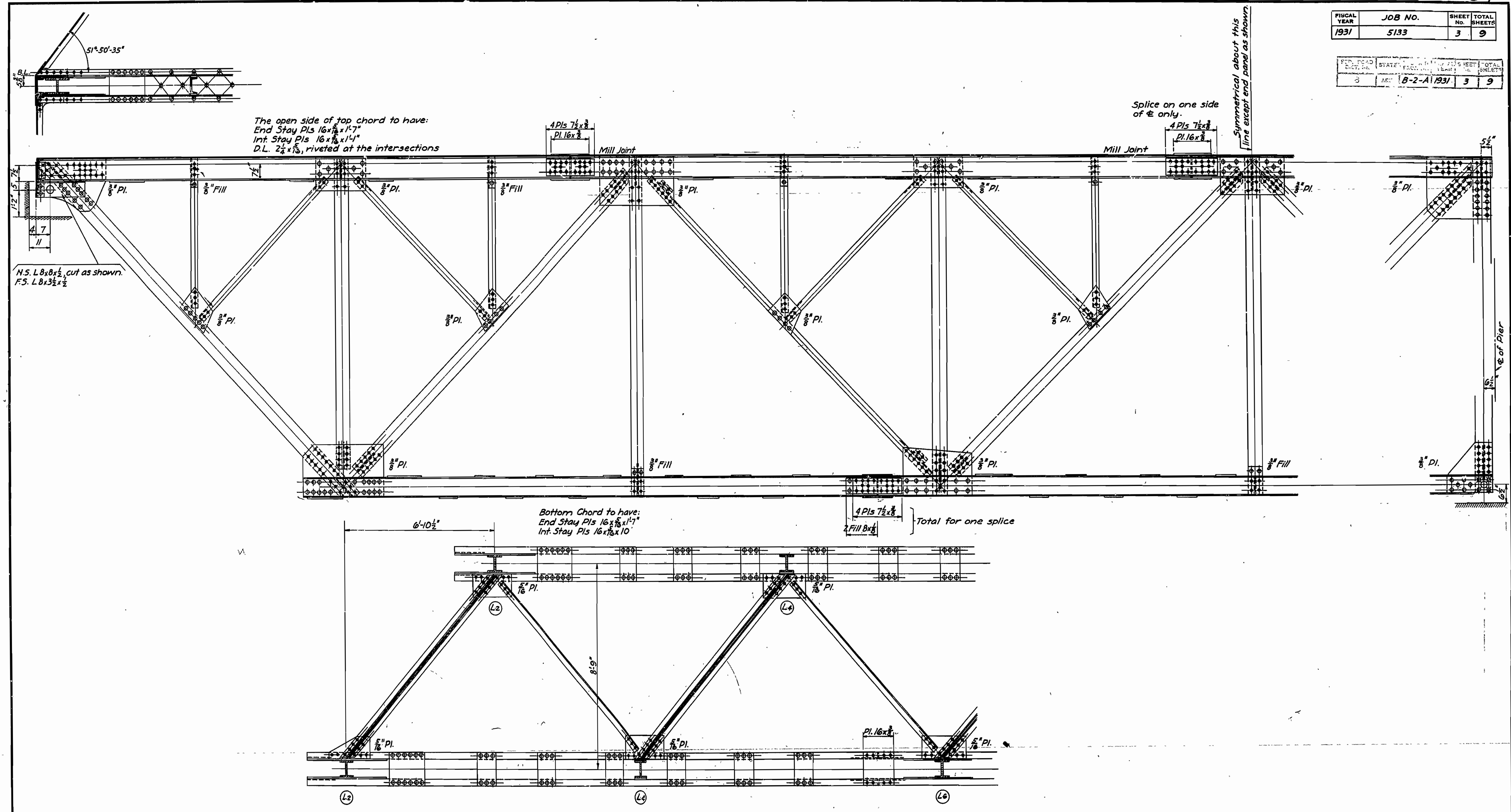
Scale: 1 in. = 10 ft.

BRIDGE NO. 1400 DRAWING NO. 3020

M.B. Lawrence
 BRIDGE ENGINEER

| FISCAL YEAR | JOB NO. | SHEET NO. | TOTAL SHEETS |
|-------------|---------|-----------|--------------|
| 1931 | 5133 | 3 | 9 |

| FED. ROAD DIST. NO. | STATE | FISCAL YEAR | SHEET NO. | TOTAL SHEETS |
|---------------------|-------|-------------|-----------|--------------|
| 3 | ARK. | B-2-A1 1931 | 3 | 9 |



For General Notes see Drwg No. 3022

110'-0" DECK TRUSS-13'-0" CLEAR RDWY
 BRIDGE OVER N. SYLAMORE CREEK
 STONE COUNTY
 ROUTE 5 SEC. 6

ARKANSAS STATE HIGHWAY COMMISSION
 LITTLE ROCK, ARK.

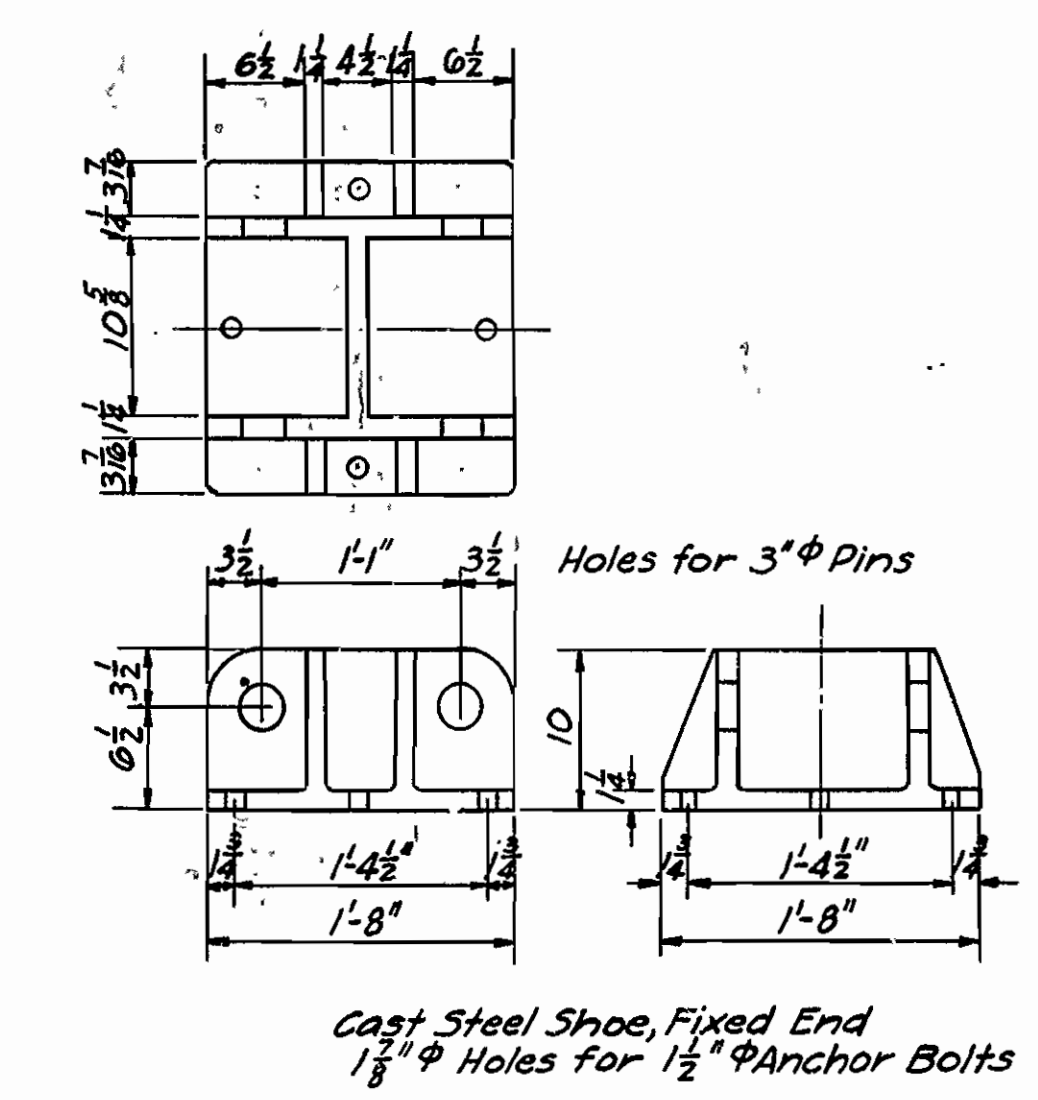
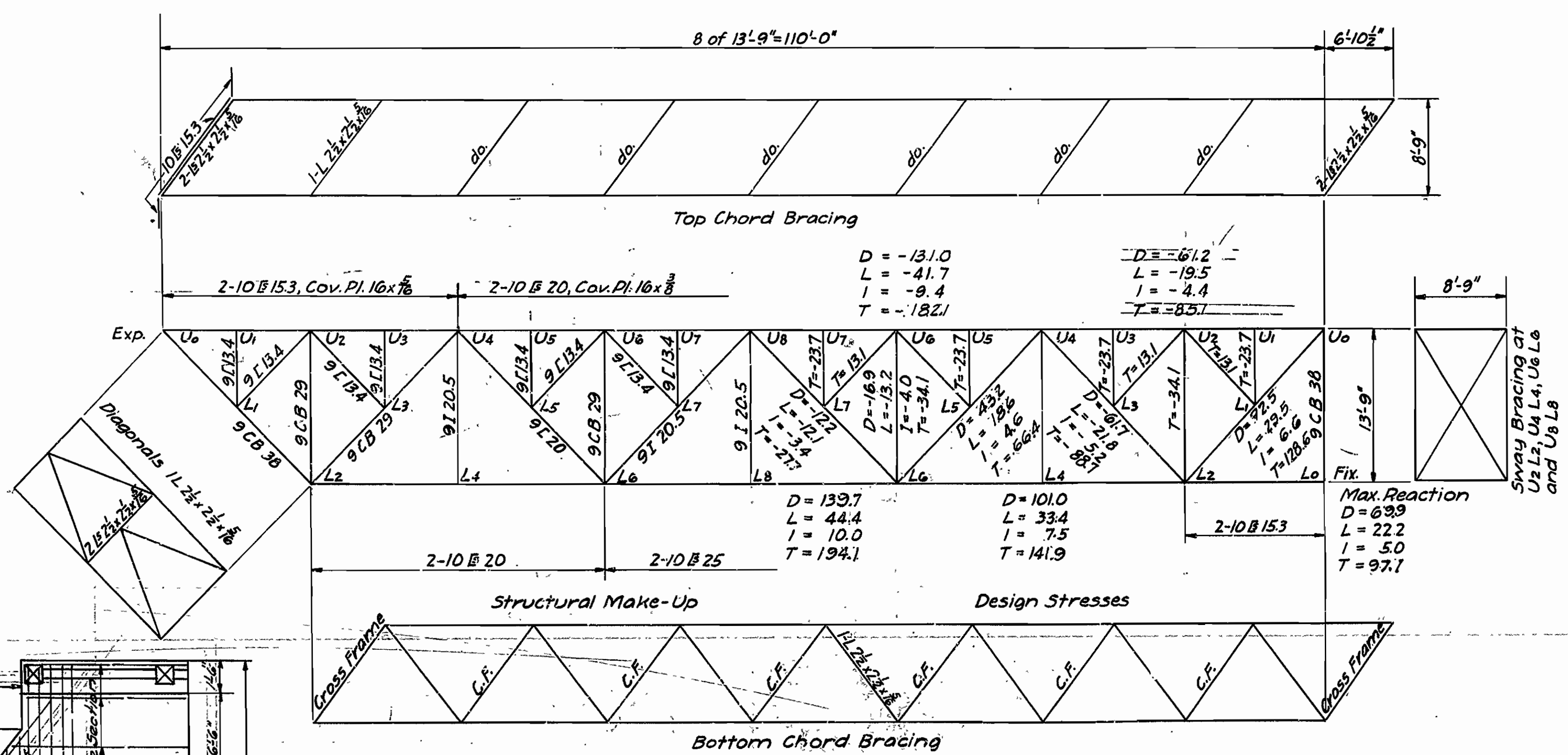
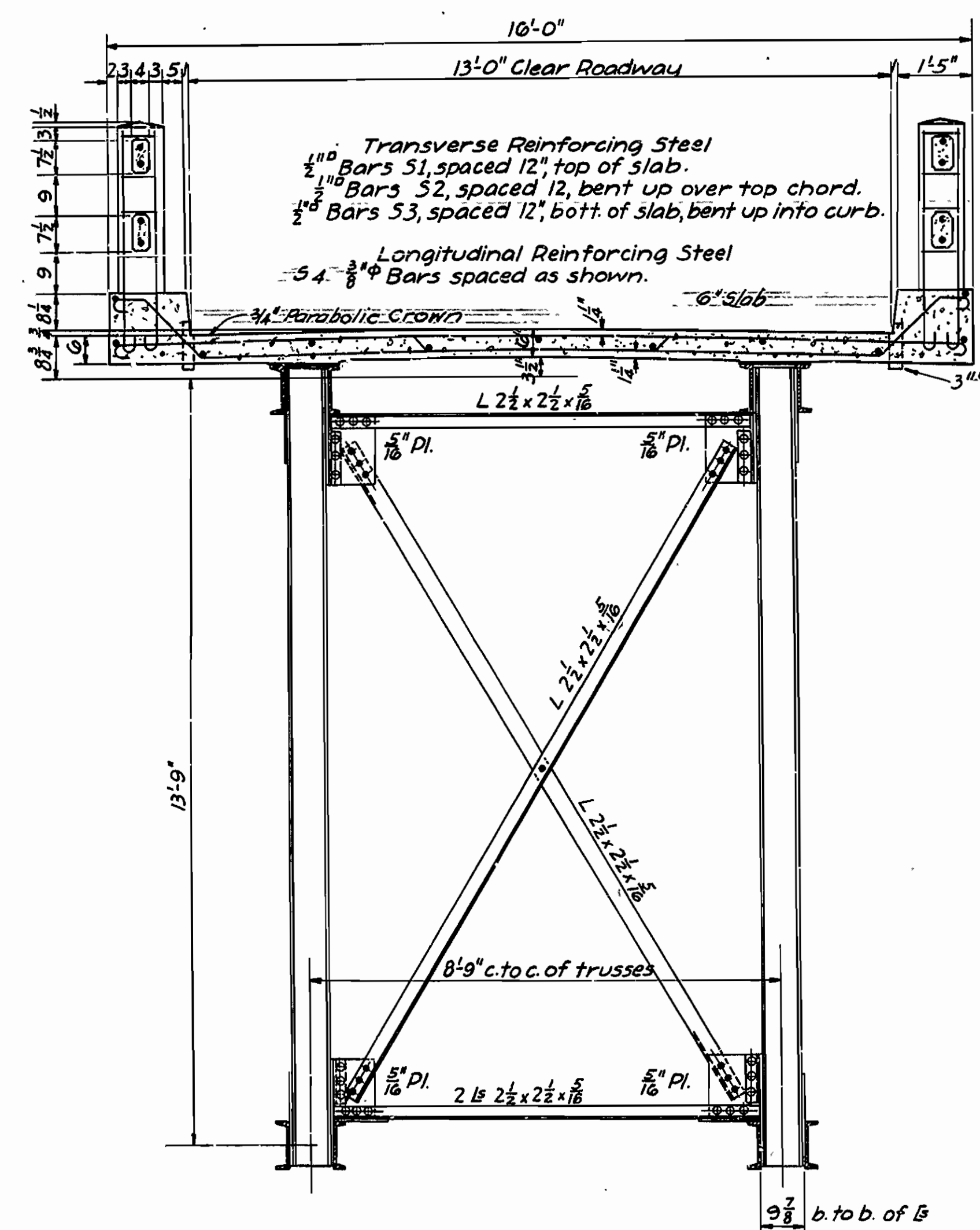
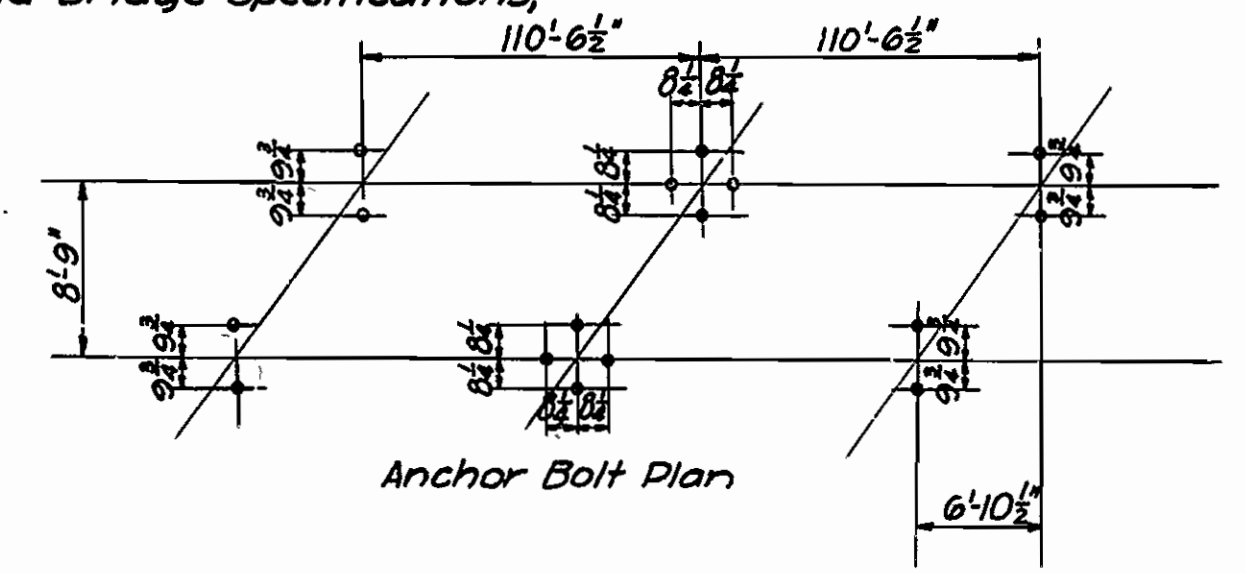
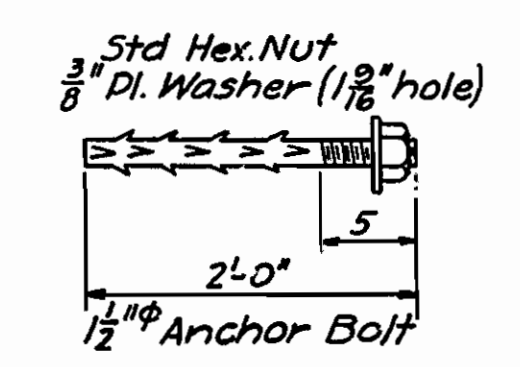
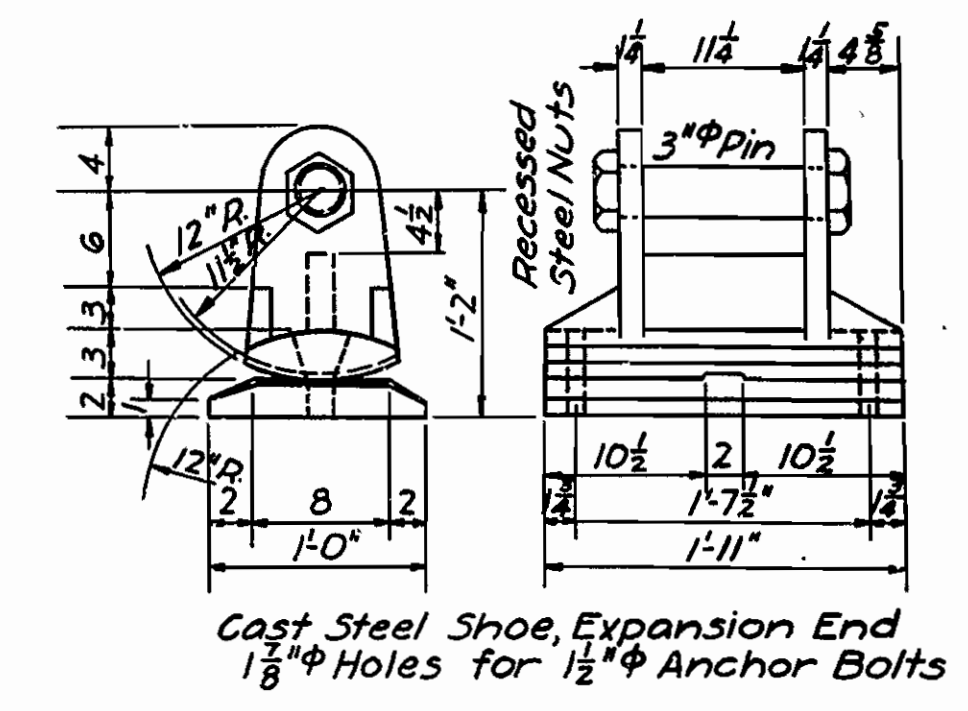
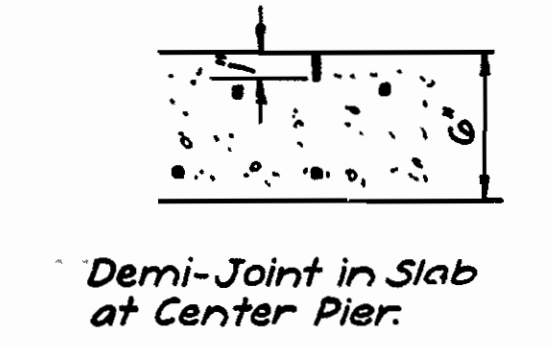
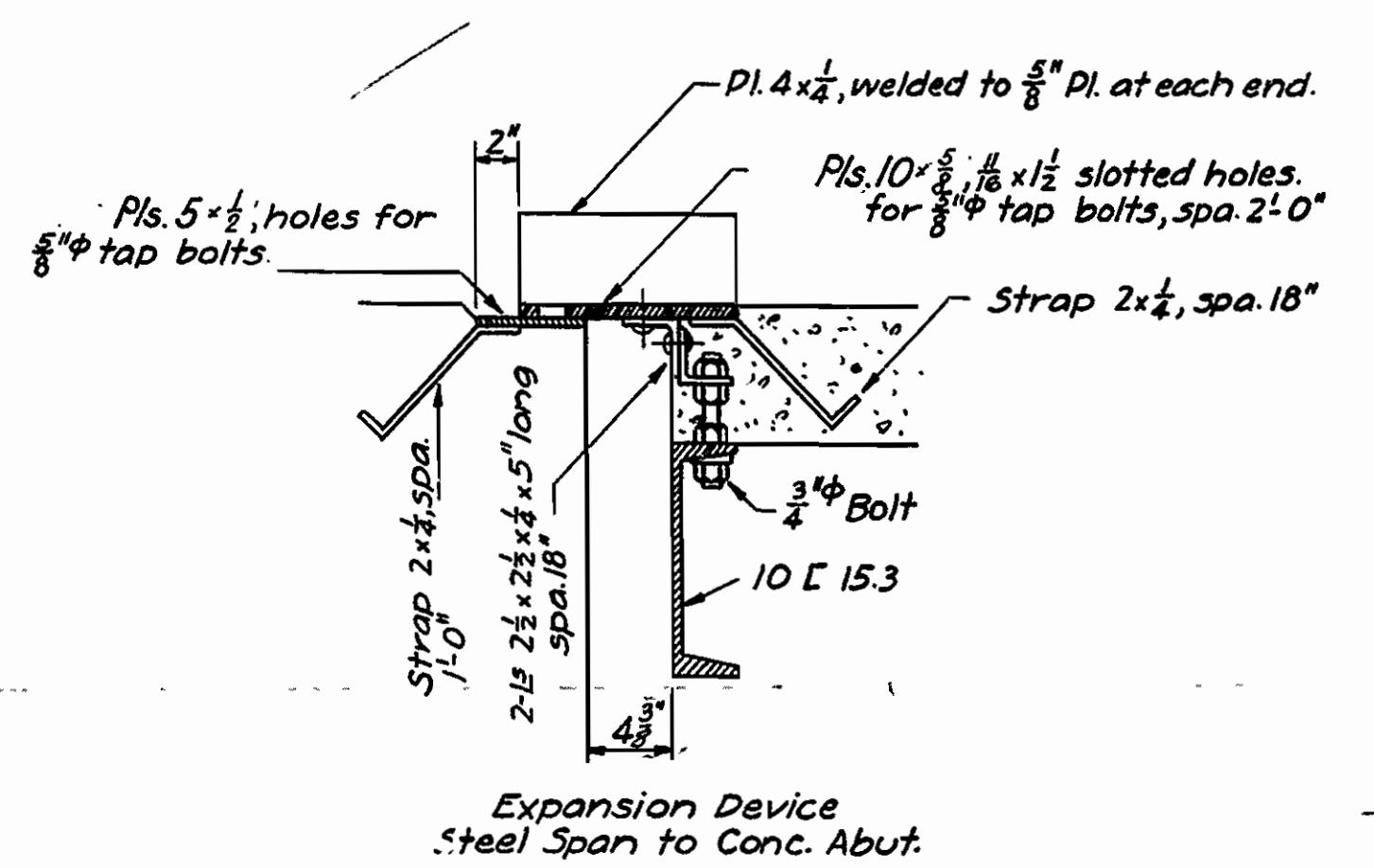
Drawn By: A. Date: 3-6-31
 Traced By: J. Date: 3-9-31
 Checked By: C. Date: 3-25-31
 Scale: 1/2" = 1' ft
 BRIDGE NO. 1400 DRAWING NO. 3021

M.B. Stone
 BRIDGE ENGINEER

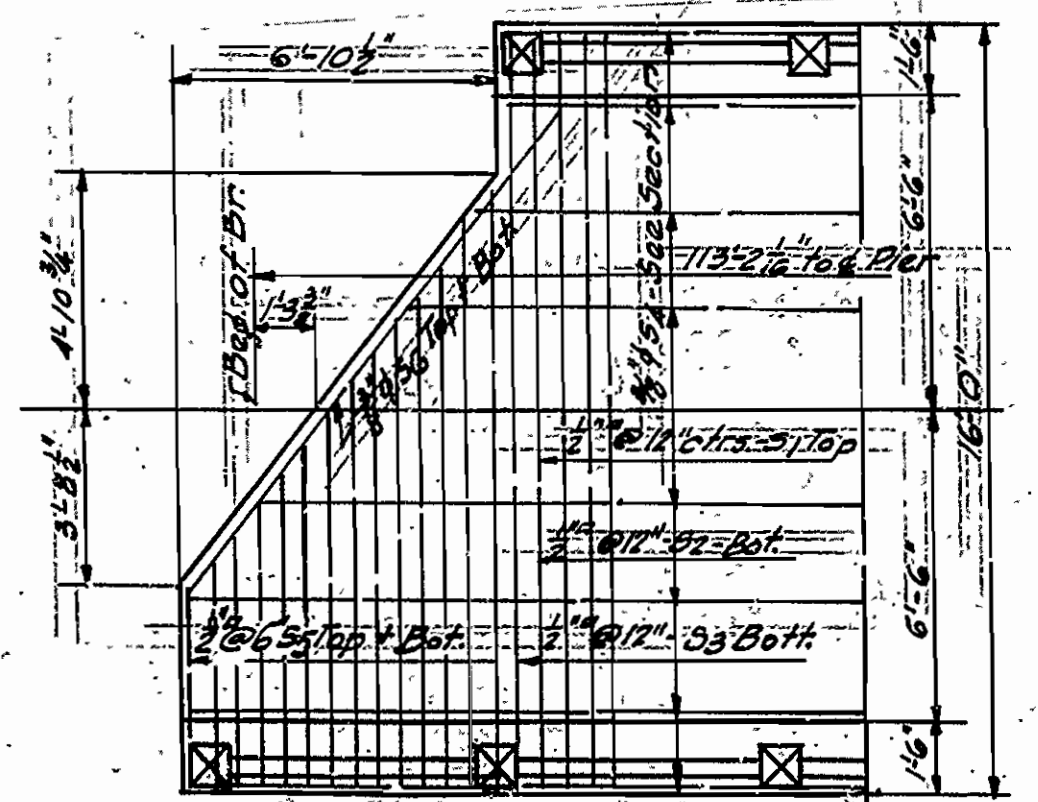
| | | | |
|-------------|---------|-----------|--------------|
| FISCAL YEAR | JOB NO. | SHEET NO. | TOTAL SHEETS |
| 1931 | 5133 | 4 | 9 |

| | | | | | |
|-----------|-------|-------|---------|-----------|--------------|
| PROJ. NO. | STATE | DIST. | SECTION | SHEET NO. | TOTAL SHEETS |
| | B-2-A | | | 4 | 9 |

Notes
 Rivets $\frac{3}{4}$ " open holes $\frac{13}{16}$ "
 All holes in main connections of trusses to be sub-punched $\frac{3}{16}$ " and reamed to size while truss is assembled; this applies to shop as well as field rivets.
 Marred places of field rivet heads, etc. are to be spot painted with red lead and raw linseed oil before first field coat is applied.
 All field connections shall be riveted.
 Shop paint: After completing assembly and shop work, all pieces shall be given one coat of red lead and raw linseed oil before shipment.
 Field paint: Apply two coats of paint as designated on layout sheet.
 Floor slab concrete to be Class 5.
 Shapes of equal or greater strength may be substituted for the structural shapes shown but payment will be made in accordance with sizes given on plans.
 This drawing shows general features of design only.
 Shop drawings shall be made in compliance with specifications, submitted and approved before fabrication is begun.
 Roadway drains and expansion devices to be paid for at unit price bid for structural steel.
 Specifications: Arkansas Standard Road and Bridge Specifications, adopted May 30th, 1925 and as revised.

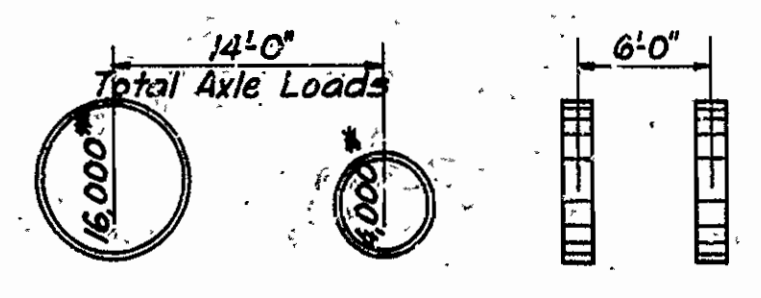


| Mark | Size | Length | Bending Diagram |
|------|---------------------|---------|-----------------|
| S1 | 1 1/2" | 10'-8" | |
| S2 | 1 1/2" | 16'-11" | |
| S3 | 1 1/2" | 17'-6" | |
| S5 | varies 4x8 to 12x12 | | |



Unit Stresses
 Concrete 750⁺ per sq. in.
 Reinforcing Steel 16,000⁺ per sq. in.
 Structural Steel 16,000⁺ per sq. in.
 Live Load
 H-10 Loading

QUANTITIES
 Concrete Class 5 142.2 Cu. Yds.
 Reinforcing Steel 5630 Lbs.
 Structural Steel 54,000 Lbs.
 Note: expansion devices not included.



110'-0" DECK TRUSS-13'-0" CLEAR RDWY
BRIDGE OVER N. SYLAMORE CREEK
STONE COUNTY
 ROUTE 5 SEC. 6

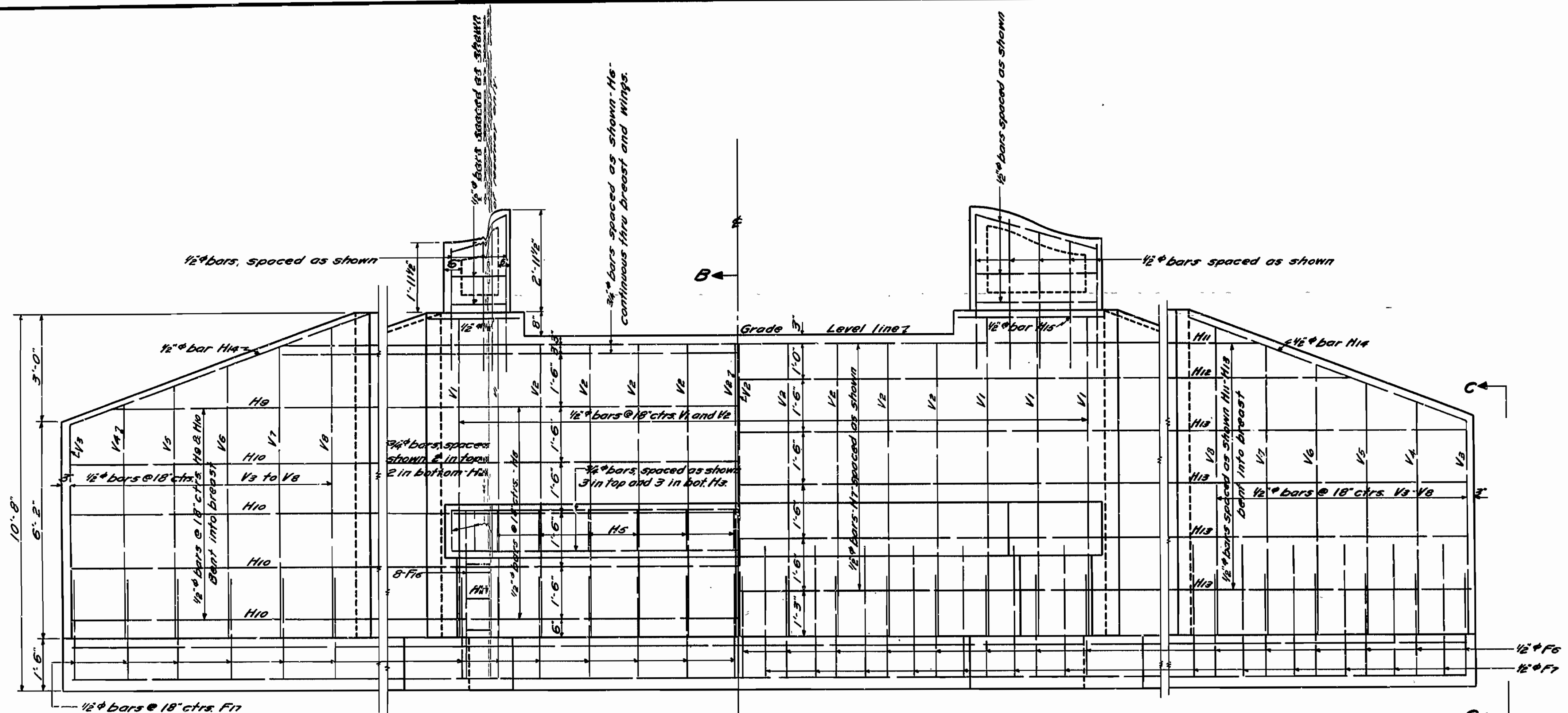
ARKANSAS STATE HIGHWAY COMMISSION
 LITTLE ROCK, ARK.
 Drawn By: A. Date: 3-5-31
 Traced By: J. Date: 3-7-31
 Checked By: K. & A. Date: 3-25-31
 BRIDGE NO. 1400 DRAWING NO. 3022

M.B. Janney
 BRIDGE ENGINEER

Scale: 1/2 in. = 1 ft.

| | | | |
|---------------------|--------------|-------------|--------------|
| FISCAL YEAR | JOB NO. | SHEET NO. | TOTAL SHEETS |
| 1930 | 5133 | 6 | 9 |
| Fed. Road Dist. No. | State | Project No. | Fiscal Year |
| 6 | Ark. | 2-A | 1930 |
| Sheet No. | Total Sheets | | |
| 6 | 9 | | |

| MARK | SIZE | LENGTH | BENDING DIAGRAM |
|------|--------|-----------|-----------------|
| H1 | 1/2" # | 8'-4" | |
| H4 | " | 9'-7" | |
| H5 | " | 7'-4" | |
| F6 | " | 5'-4 1/2" | |
| F7 | " | 6'-2 1/2" | |
| F10 | 3/4" | 5'-5 1/2" | |
| F11 | 1/2" | 3'-4" | |
| H9 | " | 9'-6" | |
| H10 | " | 10'-7" | |
| H11 | " | 4'-0" | |
| H12 | " | 6'-9" | |
| H13 | " | 10'-4" | |
| F15 | " | 27'-9" | |
| H6 | 3/4" | 26'-8" | |

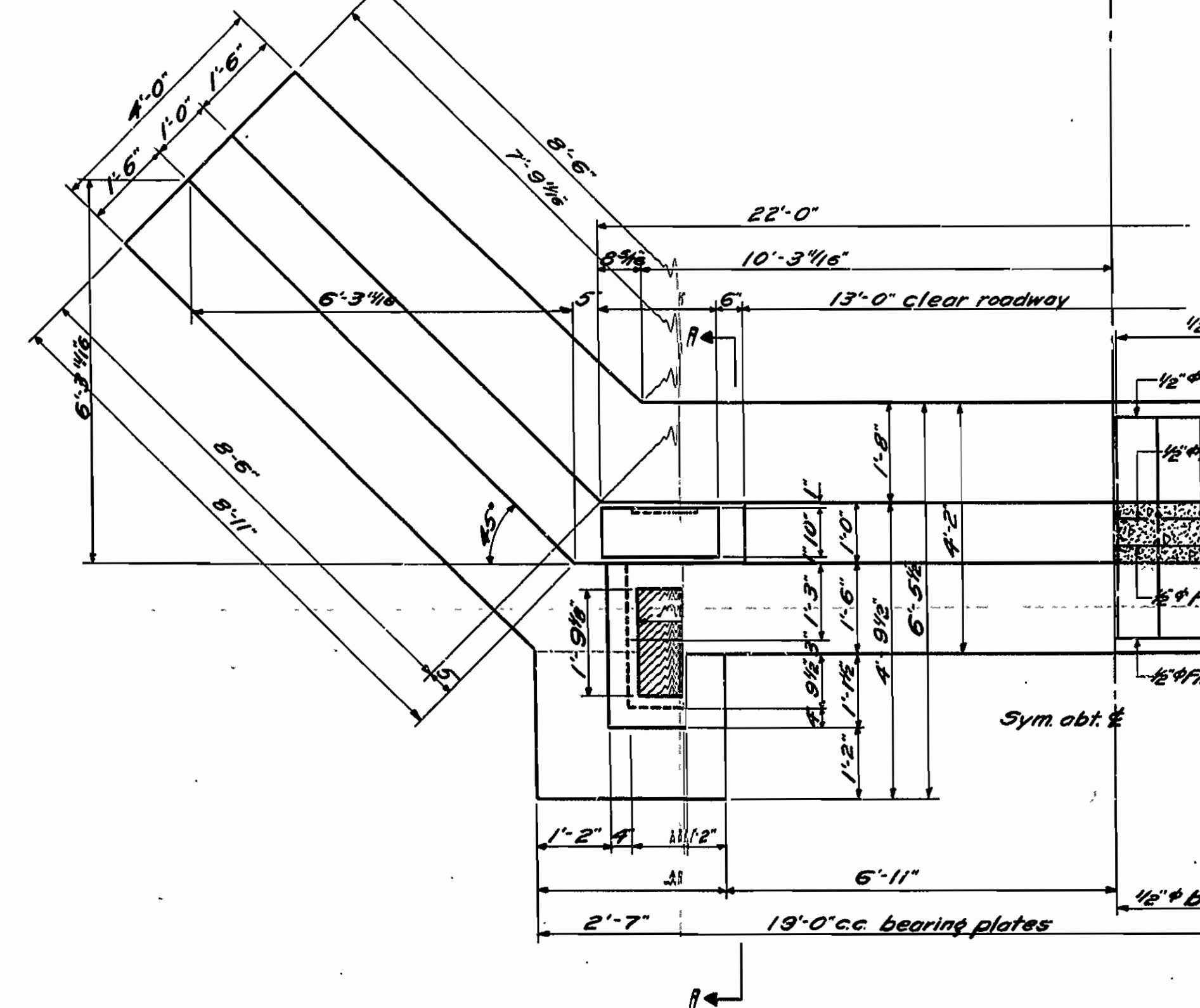


ELEVATION OF WING
Showing Front Face Reinforcing

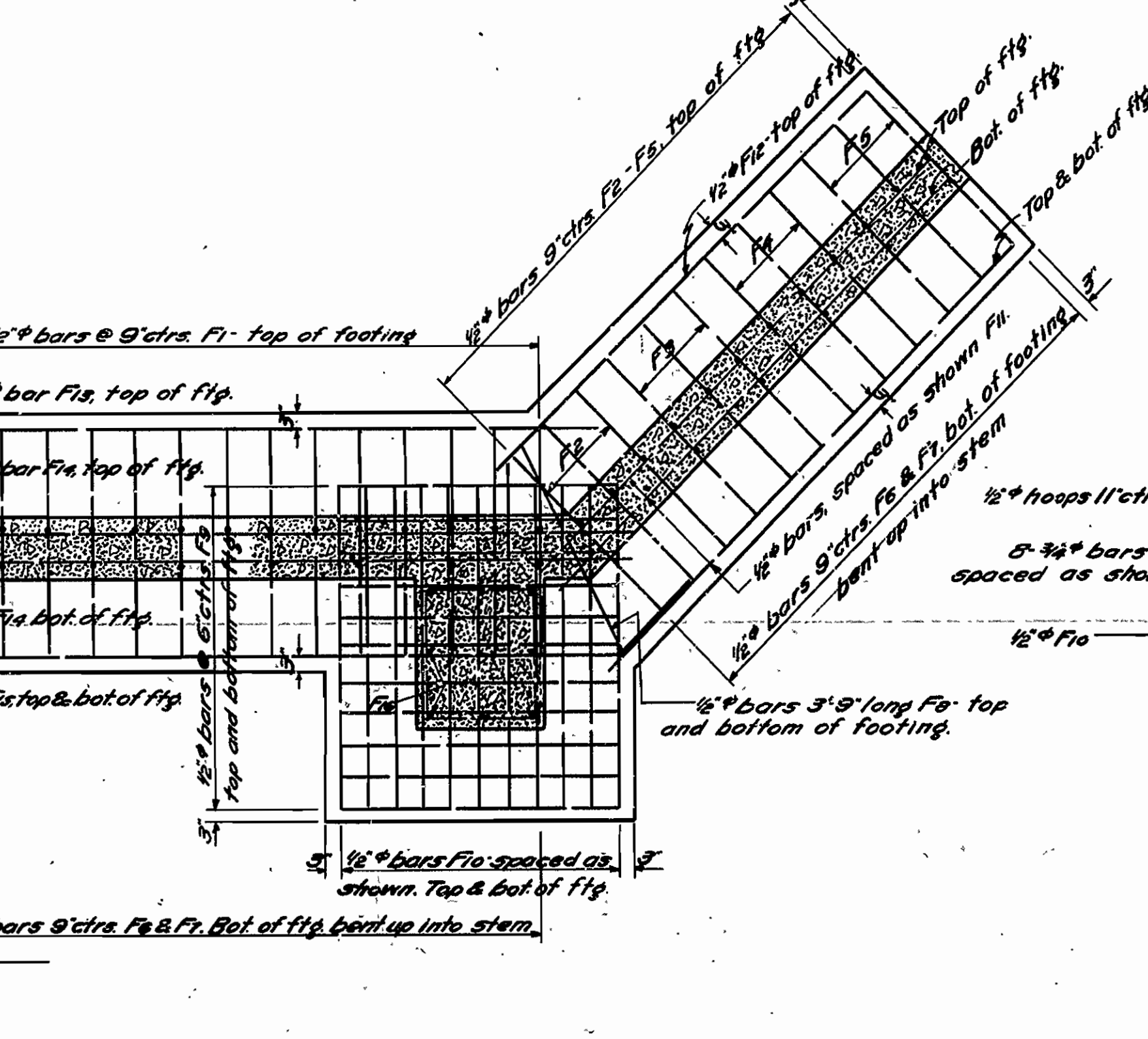
BREAST ELEVATION
Front Face Reinforcing

HALF BREAST ELEVATION
Showing Back Face Reinforcing

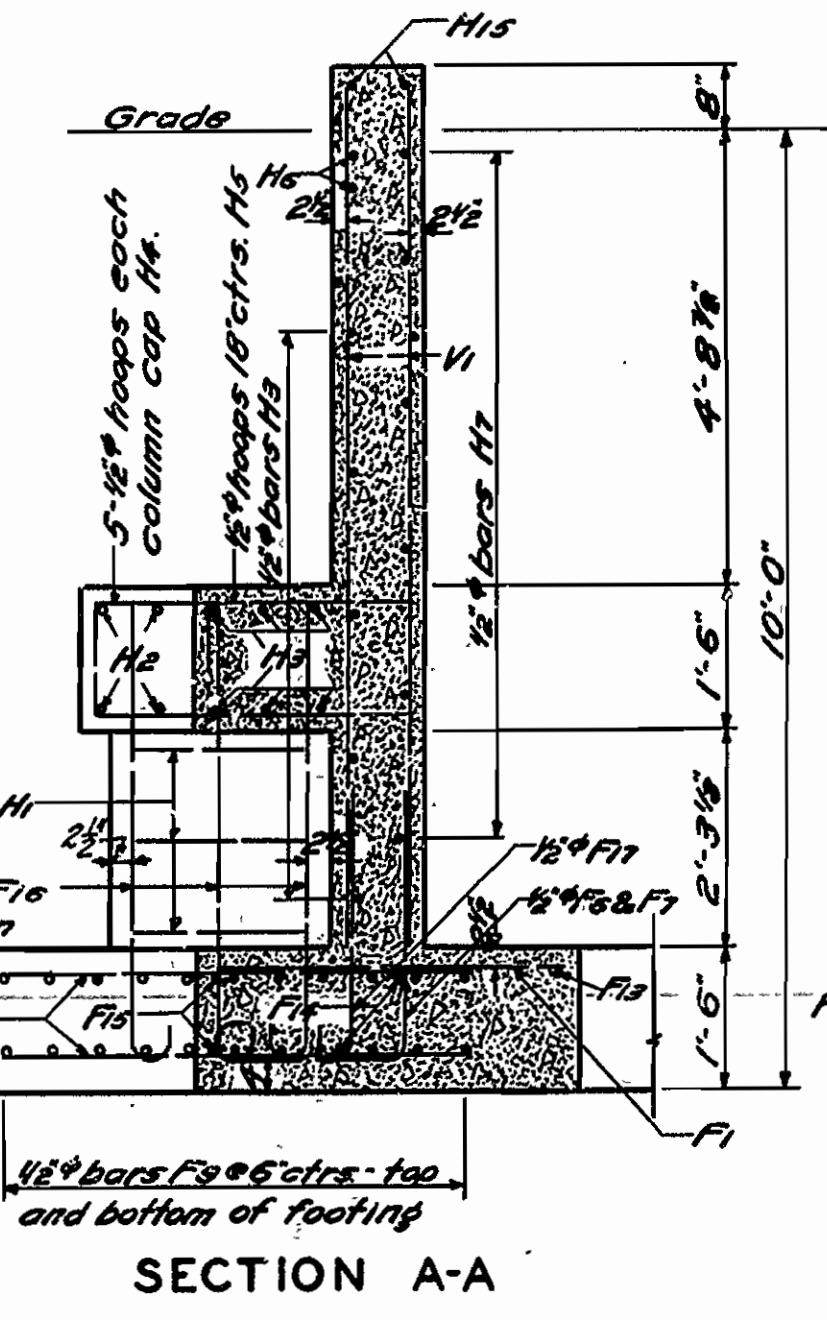
ELEVATION OF WING
Showing Back Face Reinforcing



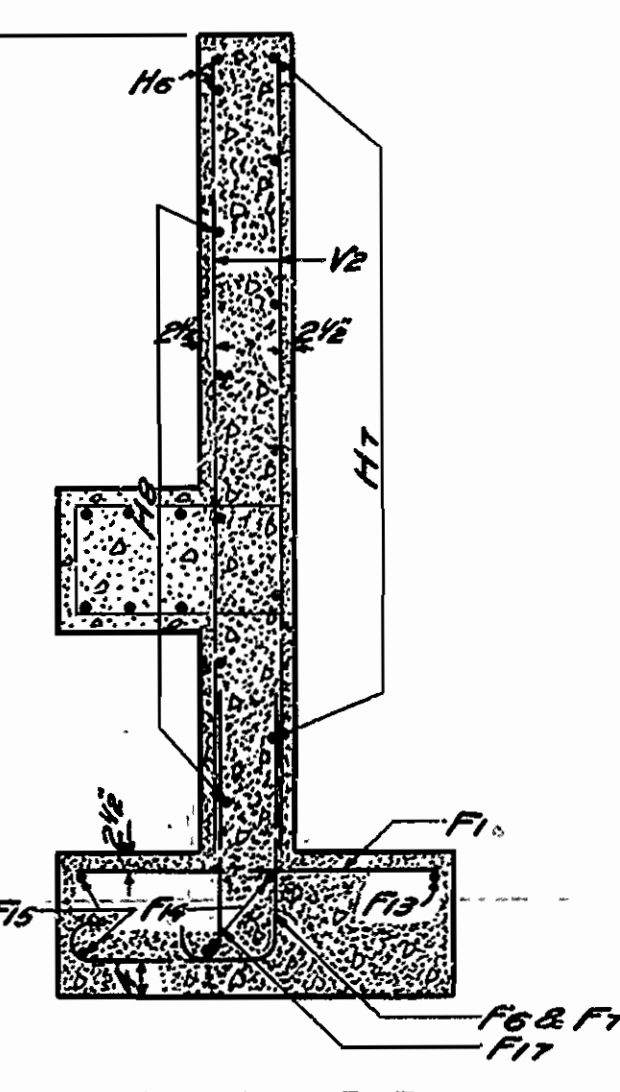
HALF PLAN
Dimensions



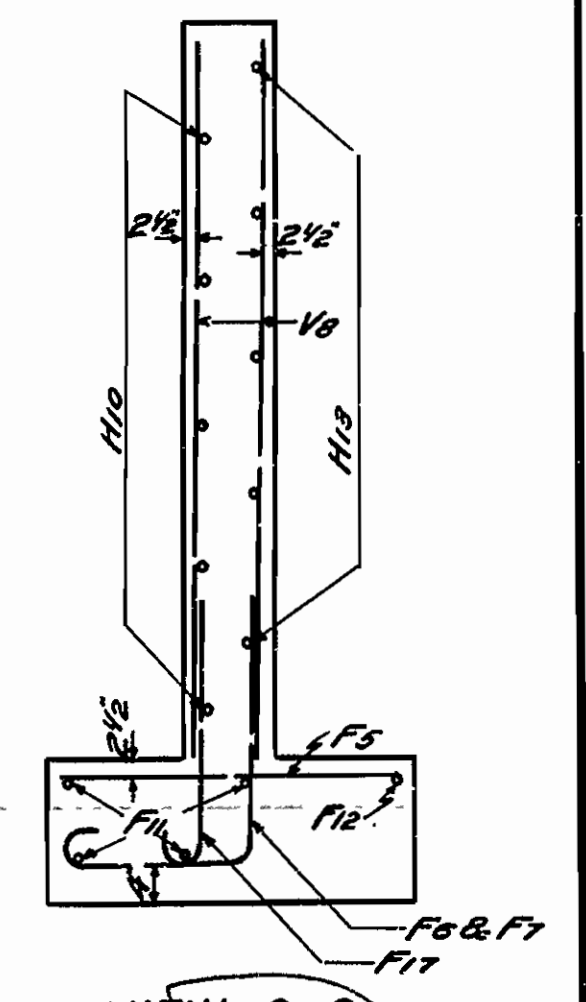
HALF FOOTING PLAN
Showing Reinforcing Steel



SECTION A-A



SECTION B-B



VIEW C-C

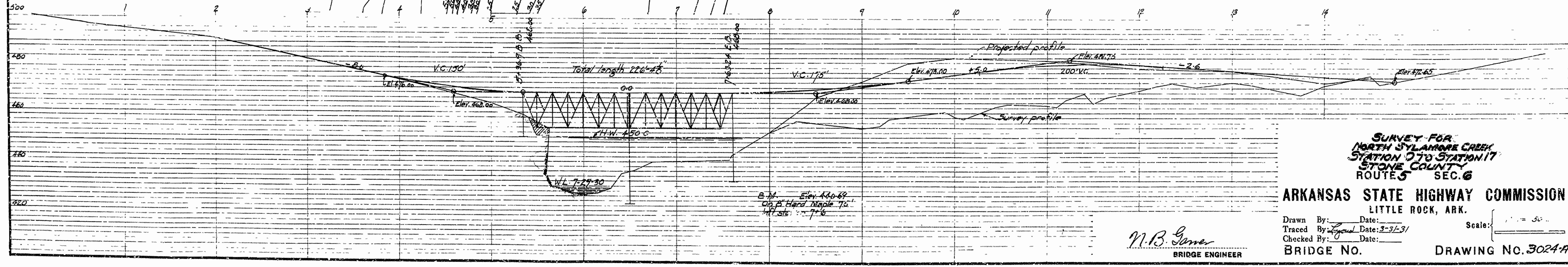
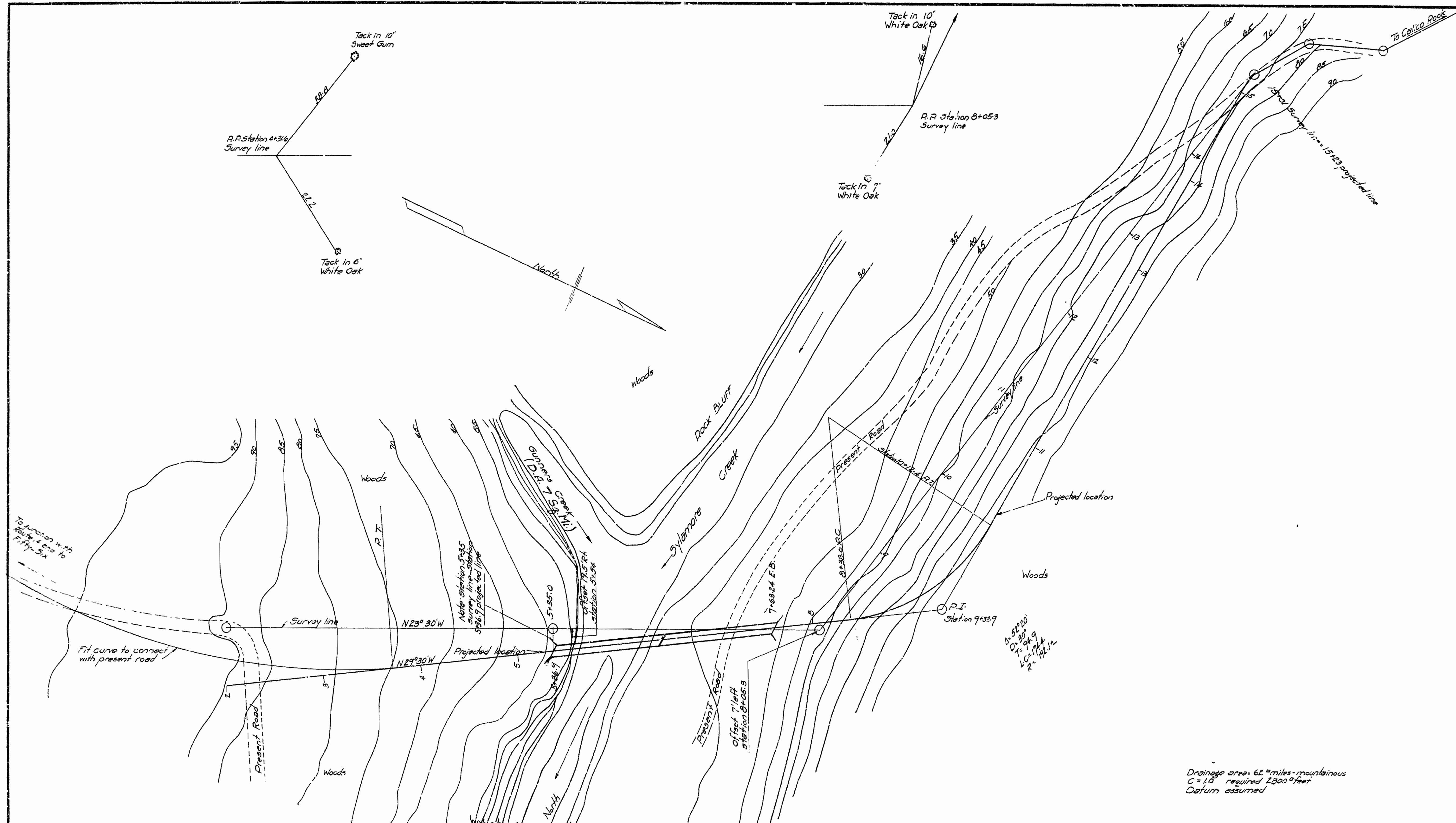
DETAILS OF ABUTMENTS
BRIDGE OVER NORTH SYLAMORE CREEK
STONE COUNTY, ARK.

ROUTE 5 SEC. 6
ARKANSAS STATE HIGHWAY COMMISSION
LITTLE ROCK, ARK.

Drawn By: Noe Date: 11-28-30
Traced By: H.W.H. Date: 12-2-30
Checked By: _____ Date: _____
Scale: 1/2" = 1 ft. 0"
BRIDGE NO. 1400 DRAWING NO. 3024

N.B. Jones
BRIDGE ENGINEER

| | | | |
|-------------|-----|-----------|--------------|
| FISCAL YEAR | AFP | SHEET NO. | TOTAL SHEETS |
| | 2A | 6A | |



Drainage area: 62 1/2 miles - mountainous
 C = 1.0 required 1200' feet
 Datum assumed

**SURVEY FOR
 NORTH SYLAMORE CREEK
 STATION 0 TO STATION 17
 STONE COUNTY
 ROUTE 5 SEC. 6**

**ARKANSAS STATE HIGHWAY COMMISSION
 LITTLE ROCK, ARK.**

Drawn By: _____ Date: _____
 Traced By: _____ Date: 3-31-31
 Checked By: _____ Date: _____
 BRIDGE NO. _____ DRAWING NO. 3024-A

N.B. Garner
 BRIDGE ENGINEER